

IMPLANT

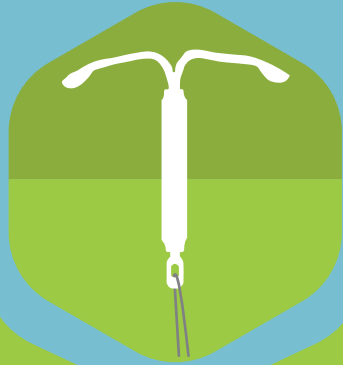


Placed by health care provider.

Lasts 3 years

MORE EFFECTIVE

IUD

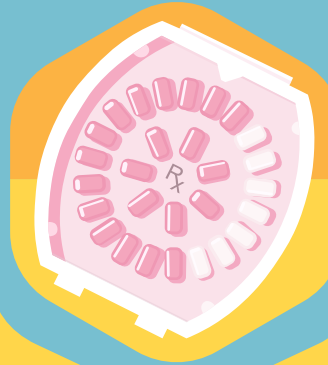


Placed by health care provider.

IUD can last up to 10 Years

MORE EFFECTIVE

PILL



Take at the same time every day.

LESS EFFECTIVE

CONDOM



Always use with preferred birth control to protect from STI's

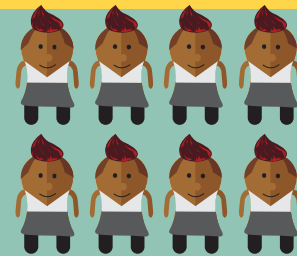
LESS EFFECTIVE



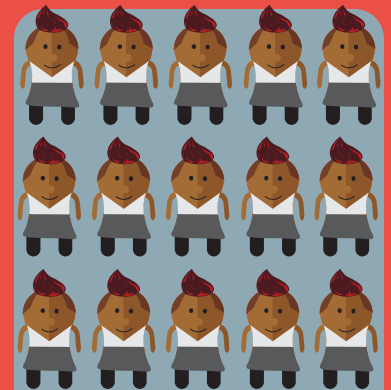
Chance of pregnancy:
Less than 1 out of 100 woman*



Chance of pregnancy:
Less than 1 out of 100 woman*



Chance of pregnancy:
8 out of 100 woman*



Chance of pregnancy:
15 out of 100 woman*

*Number of pregnancies per 100 women using the method within the first year.