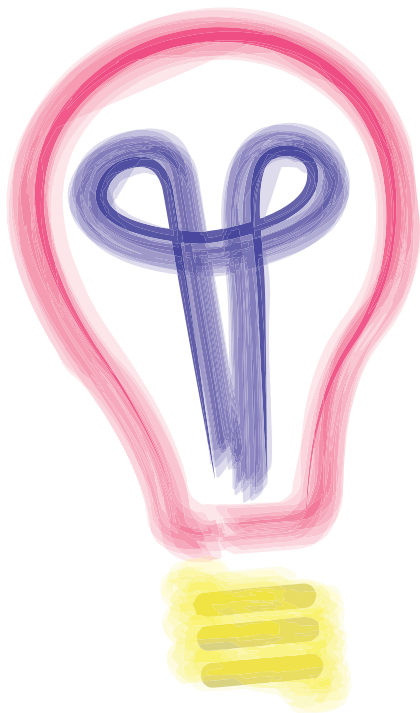


CANNABIS CONCEPTS

ACADEMICS AND CANNABIS

Regular cannabis use has short and long term effects on academics.



Short term difficulties in:

- attention and concentration
- working memory
- information processing

Long term difficulties in:

- planning, organizing and problem solving
- filtering out irrelevant material
- verbal memory

ACADEMICS AND CANNABIS Students who have been convicted of a drug charge (even minor cannabis offenses) are ineligible for federal financial aid, loans or work-study.

* 2019 National College Health Assessment Know About Marijuana Use and Driving [Fact sheet]. Retrieved from <https://www.cdc.gov/marijuana/pdf/marijuana-driving-508.pdf>



SOUTHERN ILLINOIS UNIVERSITY
STUDENT HEALTH SERVICES



@SIUHealthCenter



SHC.SIU.EDU